

invotek[®] 75 and 100



every detail makes a difference







INTEGRAL LIGHT SWITCH



HEWI DOOR FURNITURE



FINEBLIND CONTROL KNOB



GLAZED/GLAZED DETAIL



invotek® quality shows through and through

Invotek is an award winning floor to ceiling system that combines the best of modern materials with innovative design features that allow the user to plan the office environment with total flexibility. And because Invotek is truly relocatable later changes of configuration can be achieved effectively, with the minimum of disturbance to employees, utilising the basic elements time and time again.

First impressions of Invotek will be dominated by the superior quality of the system and further enhanced by the sheer range of opportunities that Invotek presents: the factory made monobloc glazed and door units with bi-bloc solid units help to reduce the number of individual components, culminating in a system that is extremely quick and easy to install, yet

provides excellent aesthetic, acoustic and fire resisting qualities.

Colour choice is extensive, the framework is available in virtually any colour and there is a wide choice of panel finishes. Single, double, tinted or etched glazed units - with or without integral fineblinds - simply extend the choice.

To provide personal storage a range of wall mounted storage and shelving units is available and, for more comprehensive office storage requirements, Invotek can be totally co-ordinated with a storage wall system.

With Invotek the only limit is the imagination.



CURVED CORNER



GLAZED/SOLID DETAIL



135° CORNER



GLAZED SIDELIGHT



invotek® the obvious choice

Invotek is a British made system that is only available from the manufacturers and their authorised network of distributors.

Working with architects, designers, specifiers and end users, the company is able to provide a full design, build and project management service, tailored precisely to clients' requirements, using the latest CAD equipment.

When considering the challenge of future office and staffing needs many leading organisations have found that to specify Invotek is the obvious choice. Exceptional relocatability, quality and company service are the prime reasons Invotek

is specified so often, resulting in a high level of repeat business and recommendations.

Consequently, Invotek has been specified on many prestigious contracts including headquarters projects for Royal Sun Alliance, Abbey Life and Chase Manhattan Bank. Additionally, Invotek has been selected by the leading banks, and other major public limited companies throughout the United Kingdom.



PROFILE COMPRESSION CLIP DETAIL



BANDED GLAZING



SHADOWLINE V-JOINT DETAIL



ACCESSORIES



invotek® in detail

Invotek offers the office designer and planner a considerable number of opportunities for making a truly individual office environment. From the small office suite to a complete head office building, Invotek has the flexibility to meet the need.

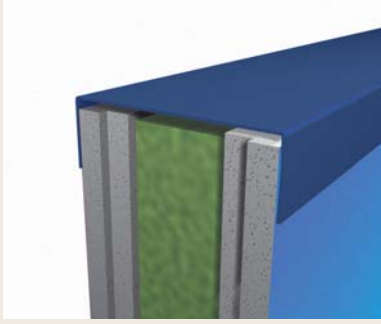
Designed with simplicity in mind, the one piece glazed units are easily relocatable and are interchangeable with solid or door units without disturbance to adjacent partitioning.

Glazing is in factory made sealed units which ensures the cavity remains clean and dust free before arrival on site.

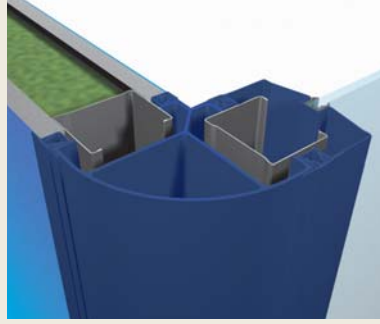
The bi-bloc solid panels are simply held in place by either profile compression or concealed clips, which mean accessibility for services, run horizontally or vertically has never been easier. The pre-decorated panels can be removed from either side very quickly for access to services.

Invotek houses a built-in tolerance within the head channel to allow for those minor building deviations which can otherwise cause a problem when it comes to relocating the partitioning.

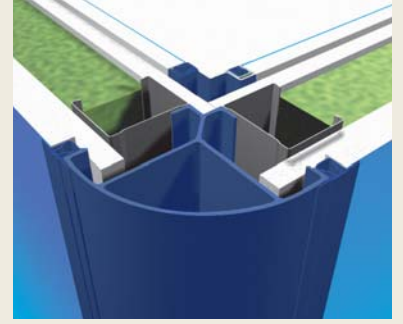
invotek® Section Details



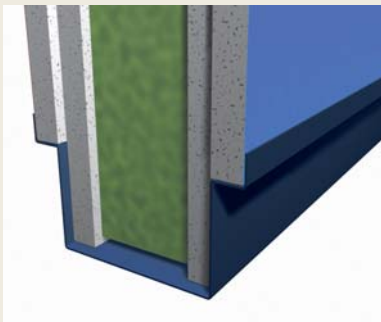
INVOTEK 100 SOLID/HEAD



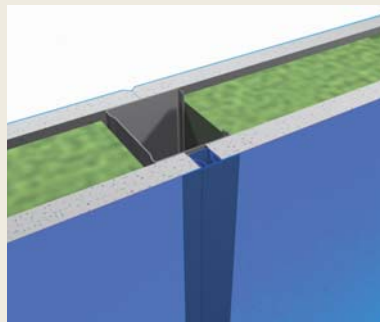
INVOTEK 75 SOLID/SINGLE GLAZED



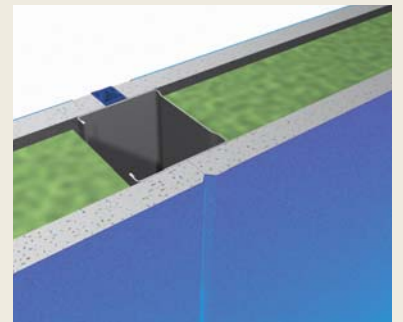
INVOTEK 100 SOLID/SOLID



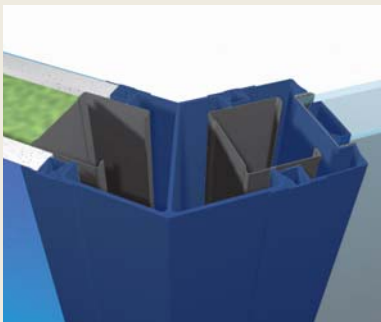
INVOTEK 100 SOLID/FLOOR



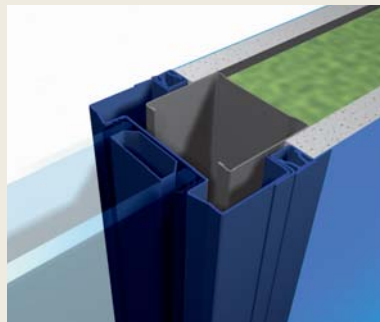
INVOTEK 75 SOLID PROFILE CLIP



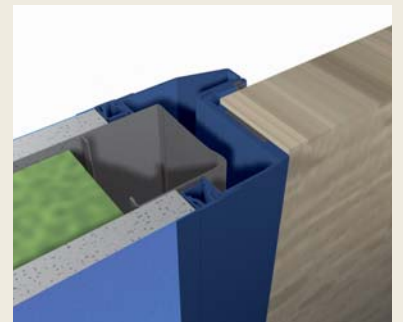
INVOTEK 75 SOLID 'V' JOINT DETAIL



INVOTEK 75 45°



INVOTEK 75 SOLID/DOUBLE GLAZED



INVOTEK 75 SOLID/DOOR

Acoustic Performance

The field incidence transmission losses of solid partitioning have been tested in strict accordance with BS 2750:1980 and to BS 5821:1980.

The table below lists the results obtained:

MODULE CONSTRUCTION	BS 2750 (100-3150 Hz) SRI Average	SPEECH RANGE (400-2500 Hz) SRI Average	BS 5821 Rw
75mm Single skin with no sound baffle	36db	42.2db	39db
75mm Single skin with 40mm Rockwool RWA45 slab	42.7db	47.9db	47db

The figures shown above are for ideal environments and are subject to on-site conditions.

invotek® 75 and 100 Technical Specification

■ General description:

Non-loadbearing fully relocatable floor to ceiling system based on a steel framework with sound reducing and fire resistant panels, erected in a combination of solid, single and double glazed panels.

■ Framework:

A pre-finished steel head and recessed floor channel. Internally constructed from 47mm galvanised posts with telescopic heads to allow for building deviation.

■ Tolerance:

+/- 10mm

■ Panel:

Bi-bloc construction comprises one pre-finished vinyl wrapped 12.7mm thick panel either side of framework with 45Kg/m³ acoustic slab in void as an optional extra. Fabric, laminated or veneered panels available to specification.

■ Panel joint:

Profile compression clip as standard with shadowline V-joint as an optional extra.

■ Module:

1212mm Nominal with other sizes available to suit requirements.

■ Height:

Up to 3600mm.

■ Thickness:

75mm Overall.

■ Weight:

Approximately 24.00 Kg/m² of solid panel.

■ Invotek® 100 panel option:

For acoustic performance of up to 50db, subject to on-site conditions-100mm thickness overall.

■ Finishes:

Polyester powder coating to all exposed steel components, available in an extensive range of colours as standard. Wood veneer effect also available.

■ Glazing:

Factory made pre-glazed monobloc units, with glass to specification, held in by P.V.C. glazing gasket.

■ Blinds:

Integral 25mm fineblind to sealed double glazed units with knob control for tilt and turn function and concealed mechanism. Surface fixed to single glazed units.

■ Skirting:

Integral recessed steel skirting, colour as framework.

■ Doors:

Pre-fabricated steel door frames, standard size or full height, with sound seals incorporated into door stops. Doors can be veneered, laminate or glass, hung on steel colour coated hinges.

■ Door furniture:

Hewi lever latch, or lock as standard, or to specification.

■ Services:

Integral architrave light switch incorporated within doorframe as an optional extra. Most electrical, British Telecom and other services can be accommodated within cavity of partition. Compartment trunking can be provided behind recessed skirting if required.

■ Integral accessories:

A range of accessories can be incorporated by means of a hanging facility incorporated within the junction detail of the system.

■ Spread of flame:

Class 'O' to comply with the Building Regulations 1991.

■ Fire resistance:

Half-hour Fire Resistance can be provided to BS 476 Part 22 1987.

Invotek operates a quality system that is designed to meet the requirements of BS 5750 (Part 2) and ISO 9002.

Other Brochures available from Invotek:

[invotek®glasswall](#)

[invotek®glasswall elite](#)

[invotek®flushwall](#)

invotek®
PARTITIONING SOLUTIONS