



invotek® flushwall

invotek® flushwall Technical Specification

General description:

Non-loadbearing floor to ceiling system with Sound Reducing and Fire Resistant panels, erected in a combination of solid panels with flush finish.

Framework external:

Pre-finished 25mm deep aluminium head and abutment channel. A recessed tapeable profile available as an optional extra.

Framework internal:

Internally constructed from 47mm or 73mm galvanised posts and 49mm or 75mm cross channels.

Exposed framework:

Polyester powder coating to all exposed aluminium components available in a wide range of colours as standard with optional SAA finish available.

Panel:

1 or 2 No. 12.5mm thick panel either side of framework with 45Kg/m³ sound quilt in void as an optional extra.

Panel finish:

Emulsion paint finish or vinyl.

Panel joint:

Tape and filled joints.

Module:

1200mm Nominal with other sizes available to suit requirements.

Height:

Up to 4000mm

Thickness:

75mm and 100mm overall.

Weight:

Approximately 24.00Kg/m³ of solid panel for single skin option and 43.00Kg/m³ for double skin option.

Door units:

Standard or full height, aluminium with sound seals incorporated into door stops, or timber, fitted with solid core veneer door. Fire-rated frames fitted with intumescent strips and smoke seals available as optional extra.

Door furniture:

Hewi lever latch or lock furniture, or to specification.

Skirting:

MDF, laminate, and various timber options, with recessed feature available as optional extra.

Services:

Most electrical British Telecom and other services accommodated with cavity of partition.

Spread of flame:

Class 'O' to comply with the Building Regulations 1985.

Fire resistance:

Half-hour and one hour Fire Resistance can be provided to BS476 Part 22 1987, at extra charge. However, any glazing incorporated will not provide insulation.

Acoustic performance:

A solid module with single skin and 45Kg/m³ quilt infill can achieve Rw dB rating up to 47dB in accordance with BS5821. A solid module with double skin and 45Kg/m³ quilt infill can achieve Rw dB rating up to 51dB in accordance with BS5821.



Invotek operates a quality system that is designed to meet the requirements of BS 5750 (Part 2) and ISO 9002.

Other Brochures available from Invotek:

[invotek® glasswall](#)

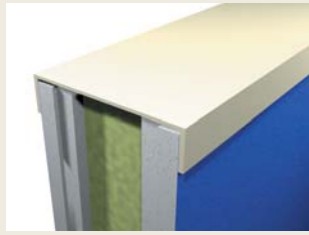
[invotek® glasswall elite](#)

[invotek® 75 and 100](#)

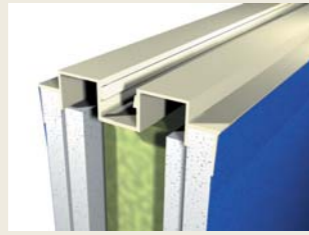
invotek®
PARTITIONING SOLUTIONS

every detail deserves attention

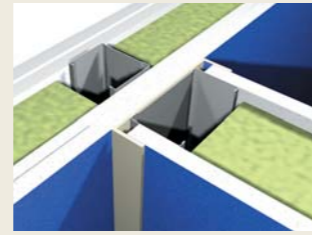
Email: stuart@invotek.co.uk www.invotek.co.uk



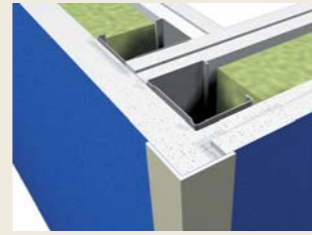
HEAD - CHANNEL



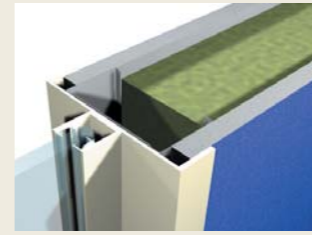
HEAD - TAPEABLE



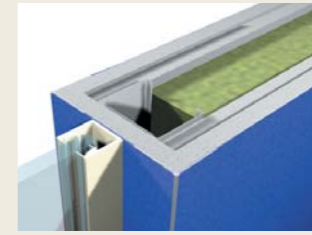
ABUTMENT - CHANNEL



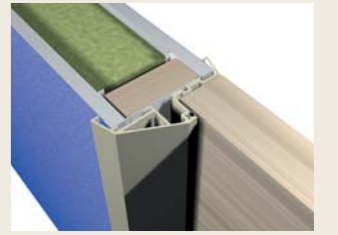
CORNER - VISIBLE TRIM



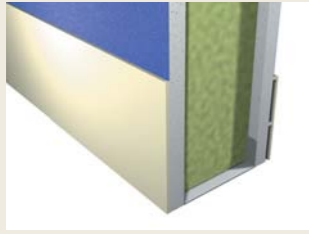
GLASSWALL - CHANNEL



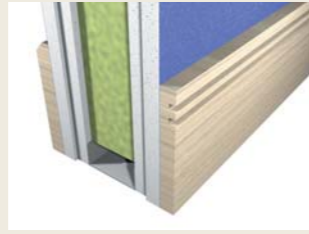
GLASSWALL - STANDARD



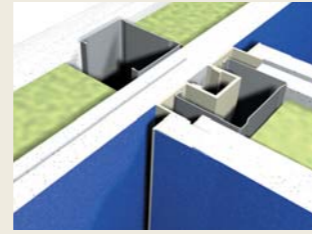
DOOR FRAME - ALUMINIUM



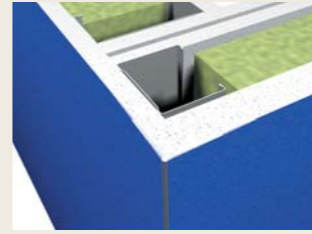
SKIRTING - LAMINATE/ALUMINIUM



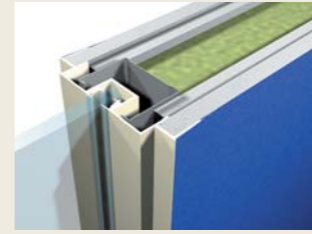
SKIRTING - MDF



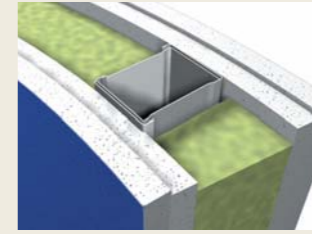
ABUTMENT - TAPEABLE



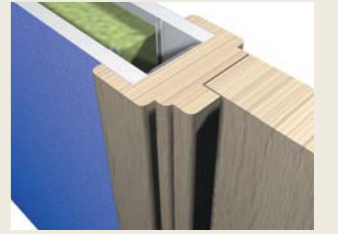
CORNER - HIDDEN TRIM



GLASSWALL - TAPEABLE



CURVED - MODULE



DOOR FRAME - TIMBER



invotek®flushwall - simple solutions

Invotek Flushwall is the perfect solution for the office environment requiring the sensation and strength of solid walls but without the inflexibility and restrictions of traditional, fixed walls and the inevitable upheaval associated with the major building works involved.



invotek®flushwall - seamless sophistication

Glazing and doors can fit seamlessly into the solid partitioning which can be finished with an almost infinite range of vinyl wallcoverings or emulsion paint. Doorsets, door furniture and skirtings can be specified in a wide range of finishes and colours to match any existing design or corporate colour scheme.



invotek®flushwall - solid structure

Invotek flushwall provides all the acoustic and design benefits of a solid wall combined with the benefits of a partitioning system that is cost effective, clean and easy to install with trouble free electrical and mechanical servicing.